



## U.S. REGIONAL SEMI-FINAL TOUR GUIDE

# SAN DIEGO, CA

March 13-16, 2025

### THEATRE

**Theaters:** The Joan B. Kroc Theatre & Performing Arts Center

**Website:** [LINK](#)

**Address:** 6611 University Ave, San Diego, CA 92115

**Stage Size:** 40.5' X 29.2'

**Auditorium Size:** 580

**Nearby restaurants:** few restaurants within a 10-minute drive

**Parking:** The community center has 375 free parking spaces, along with street parking available.



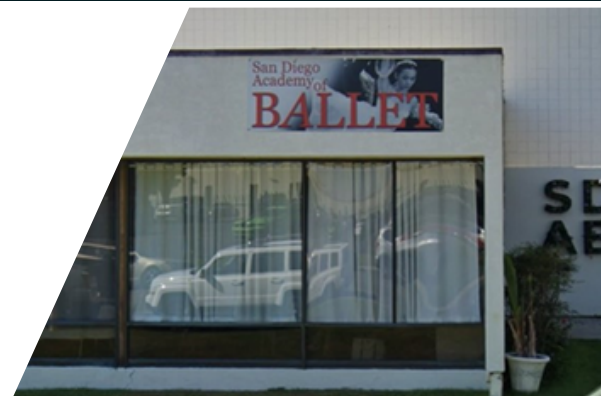
The cutting-edge Performing Arts Center, which houses the state-of-the-art yet intimate Joan B. Kroc Theatre, is located in the San Diego University area, a drive away from downtown San Diego. The Theatre has presented thousands of events, ranging from seminars and recitals to Broadway-quality shows and fundraisers. With an audience that seats 540, the theater boasts a comfortably-sized stage and ample dressing room space. This location is ideal for drivers.

### STUDIOS

**San Diego Academy of Ballet**

**Address:** 4696 Ruffner Street, San Diego, CA 92111

**Website:** [LINK](#)



### DISTANCES

**Distance from airport (SAN) to theater:** 11 miles, approximately 15 minute drive